

TIMBERLINK®

Australia & New Zealand

The Everdeck® Installer Hub is now Live!

Our go-to hub for connecting Everdeck consumers with an independent contractor to install their new deck.

People, Community and Industry Highlights

Some of our favourite moments from the last few months.

Tonsley 'Factory of the Future' Opening

See our NeXTimber CLT and GLT in action at the new college in Adelaide.



APRIL 2026
NEWSLETTER

NeXTimber®
by Timberlink

EVERDECK®
by Timberlink



Everdeck® Australian Made Wood Composite Decking — Reimagine your outdoor space.



everdeck.com.au



Wheatfield
Brown



Nutmeg
Brown



Mocha
Brown



Espresso
Brown



Driftwood
Grey



Gumnut
Grey

Why choose Everdeck®



Made in Australia

Everdeck decking boards are manufactured in Tasmania. They are designed to withstand tough Australasian conditions such as harsh sun and UV exposure, or wet and damp environments.



Simple to install

Everdeck's concealed fastening system makes installation easy. Our installation resources are suitable for both DIY and professional installers.



Engineered to last

Shop with confidence and peace of mind. Everdeck's decking system warranty lets you enjoy your outdoor space for years to come.



Looks and feels great

Everdeck offers a selection of stylish colours to complement your home or application. The concealed decking fastening system ensures a modern look, minimising visibility of fasteners.



Easy to care for

Everdeck decking boards do not require sanding, sealing or staining, leaving you more time to enjoy your outdoor space.



FSC® certified

Everdeck decking boards are FSC® certified, supporting responsible management of the world's forests.



EVERDECK
by Timberlink



The Everdeck® Installer Hub is Now Live!

We're pleased to announce the launch of the Everdeck Installer Hub, a new online resource designed to help your customers connect with installers experienced in working with Everdeck wood composite decking.

Whether your customers are planning a new outdoor space or preparing to install Everdeck, the Installer Hub provides a simple, practical way to find installer support and move their project forward with confidence.

The hub brings together a growing network of installers who are familiar with Everdeck products and installation requirements. By making it easier for your customers to connect with installers in their local area, the

Installer Hub supports installations that follow recommended guidelines and recognised best practice.

Installers can apply to be listed on the Everdeck® Installer Hub via the Everdeck website. The hub offers independent contractors an opportunity to increase visibility and connect with customers actively seeking support for Everdeck decking projects.

Visit the Installer Hub

www.everdeck.com.au/installer-hub



Everdeck Inspiration

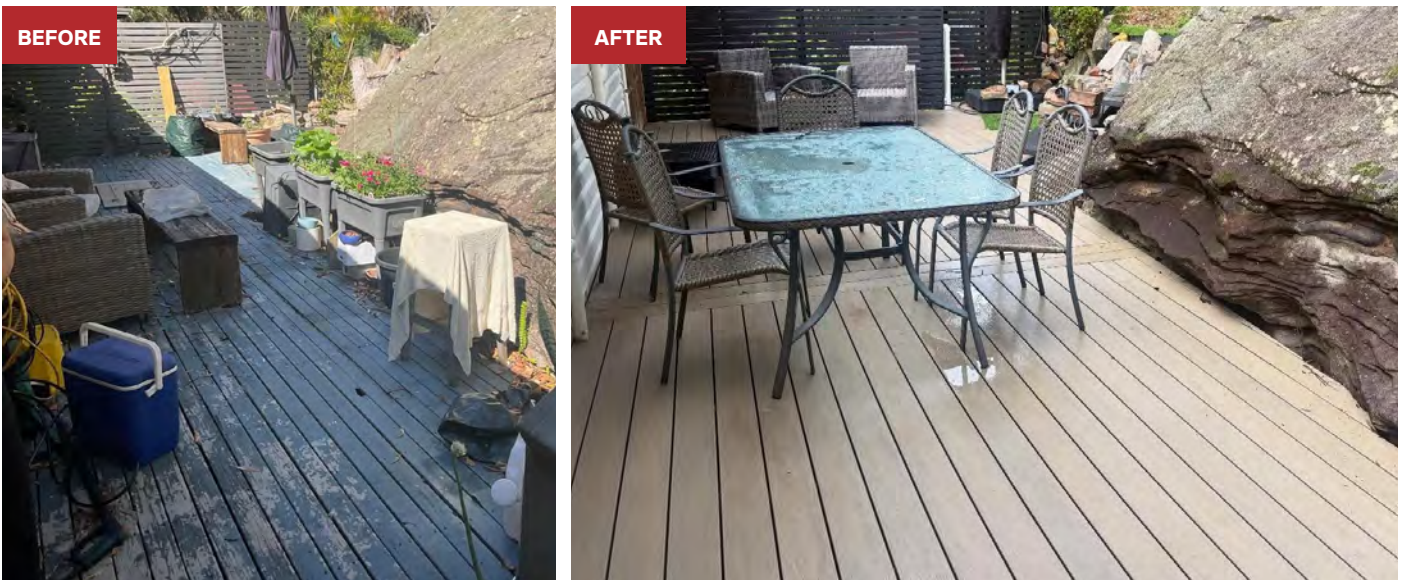
Get inspired to reimagine your outdoor space with these recent Everdeck composite decking projects!

Nutmeg Brown - MOUNT MARTHA, VIC



The Sustainable Decking Co. installed this stunning Everdeck project in Nutmeg Brown.

Wheatfield Brown - JANNALI, NSW



An incredible Everdeck transformation in Wheatfield Brown installed by the Aussie Decking Chippie.

Everdeck boards are proudly
Australian Made



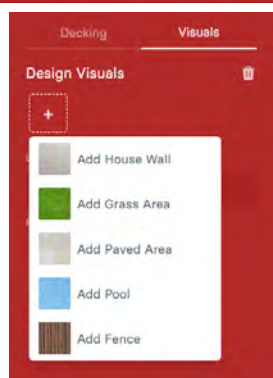
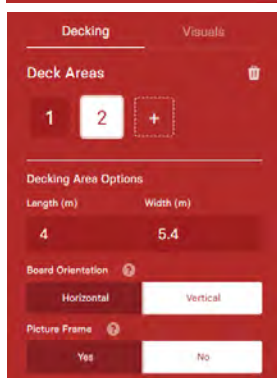
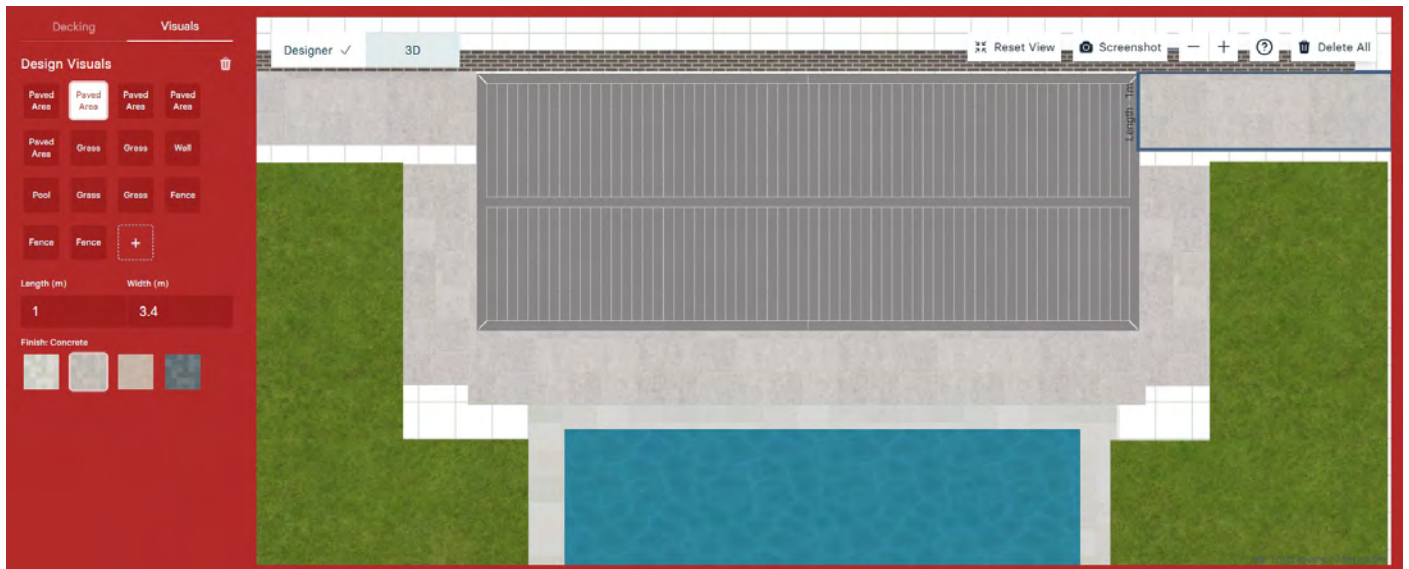
Mocha Brown - WARRAGUL, VIC



This GJ Gardner display home in Warragul, Victoria, has a beautiful deck in Everdeck Mocha Brown supported by Dahlsens.

DECK PLANNER TOOL

Customers can plan their future deck with our free interactive tool! Add elements like lawns, pools, paved areas and fences, plus try out all six colours by heading to everdeck.com.au/deck-planner.



Materials

Decking	
Estimated Decking Boards (5.4m)	44
Estimated Edge Boards (5.4m)	6
Starter Clips	1 x 25 Pack
T Clips (4 mm)	1 x 500 Pack + 3 x 50 Packs
Edge Clips	2 x 25 Packs
Wastage	16.95%



Supporting our Everdeck Stockists

Are you an authorised Everdeck stockist, or interested in becoming one? We have a suite of resources to help you promote Everdeck both instore and online.

SAMPLE KITS FOR CONSUMERS

Your customers can request a sample kit by visiting everdeck.com.au/customer-sample-ordering or by scanning the QR code.

Kit Contents

- 3x pieces of 137mm dual coloured decking board
- Everdeck® product overview flyer.



ACCESS THE EVERDECK DIGITAL STOCKIST RESOURCE PACK

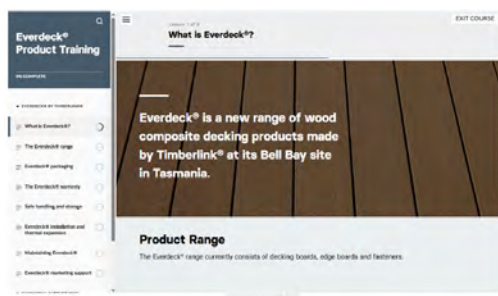
Download Everdeck images, design assets, point of sale materials, socials content and more.

To gain access to the digital stockist resource pack, visit: everdeck.com.au/resource-pack-signup.



ENROL IN THE EVERDECK ONLINE STOCKIST TRAINING MODULE

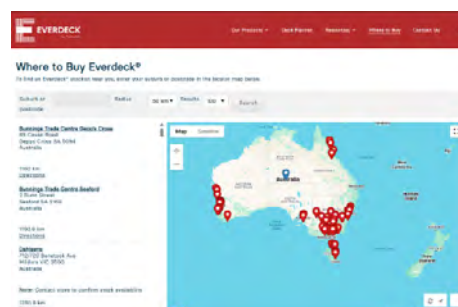
If you are interested in enrolling yourself or your team into the online Everdeck stockist training module, please contact your Timberlink account manager. This course is hosted on Timberlink Tech, our online learning platform.



EVERDECK WEBSITE STOCKIST LOCATOR MAP

Each Everdeck stockist is listed on our interactive locator map.

Head to everdeck.com.au/where-to-buy to check out it out!



Events Wrap-Up

The year is off to a strong start, with our teams attending the first events on the calendar and connecting with customers and industry peers. With many more events still to come, it's shaping up to be a big year ahead. Here's a look at where we've been so far!

TTHG Hardware Expo Adelaide

The Timberlink team kicked off the year at our first major event of 2026, attending the Total Tools and Hardware Group (TTHG) Hardware Expo in Adelaide. With a dedicated stand, we connected with customers and industry peers and showcased our Timberlink, NeXTimber and Everdeck product ranges. The expo provided valuable opportunities for conversations around timber solutions, mass timber applications and wood composite decking. Thank you to everyone who visited the Timberlink stand and took the time to connect with the team.



Timberlink's Leigh Newman, Deimon Peakman, Nigel Harkerss, Sue Wood and Alan Holter at the TTHG stand.



Our stand at Clennett's Mitre 10 Trade Expo 2026.

Clennett's Mitre 10 Trade Expo

We were thrilled to be back for this year's Clennett's Mitre 10 Trade Expo in Tasmania, connecting with customers and industry professionals from across the state. Everdeck wood composite decking was a key focus on the stand, with attendees viewing the full colour range and discussing applications suited to local conditions. Thank you to Clennett's Mitre 10 for hosting a well-attended event and to everyone who visited the Timberlink stand. We're proud to be Made of Tasmania.

Townsville Hardware Opening

We also recently attended the opening of Townsville Hardware as part of a trade night, connecting with customers and industry professionals from across North Queensland. Timberlink's Troy Clyne and Sue Wood represented the team on the night, spending time with attendees and discussing Everdeck wood composite decking. Events like this provide a valuable opportunity to connect face-to-face, share insights and better understand what matters most to customers. Thank you to Townsville Hardware for hosting a well-supported evening.



Timberlink's Troy Clyne with attendees at the Townsville Hardware opening.

People, Community and Industry Highlights

We are proud to support our people, communities and industry. Here are some of our favourite moments from the last few months.

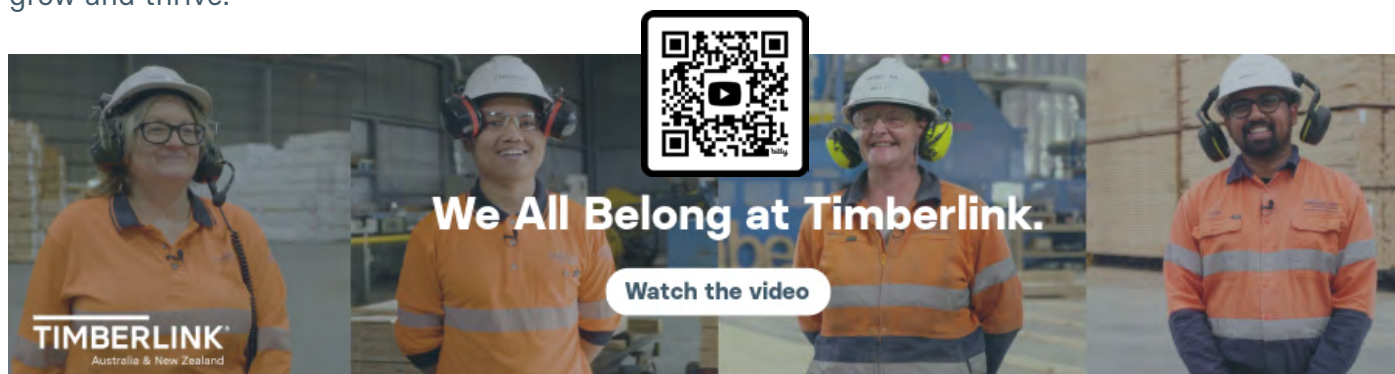
'WE ALL BELONG AT TIMBERLINK' VIDEO

At Timberlink, our people are at the heart of everything we do.

We were proud to launch our We All Belong at Timberlink video, a celebration of our people, their stories, and the many pathways that make our business what it is today. Across our operations and teams, it's this diversity that strengthens our culture and helps create an environment where everyone can contribute, grow and thrive.

Building an inclusive workplace is an ongoing journey. It means creating space for different perspectives, supporting equal opportunity, and ensuring everyone feels respected and valued for who they are and what they bring to the team.

The We All Belong at Timberlink video reflects our ongoing commitment to fostering a workplace where people feel a genuine sense of connection and belonging.



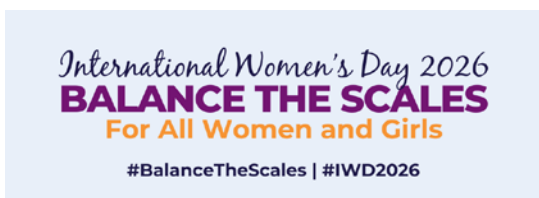
INTERNATIONAL WOMEN'S DAY

International Women's Day (IWD) is an opportunity to recognise the importance of equality and inclusion across all industries.

This year's UN Women theme, "Balance the scales", highlighted that when women stand equal, workplaces are fairer, communities thrive, and society is stronger for everyone.

Women belong in manufacturing environments, and at Timberlink we're proud to be an equal opportunity employer.

At Timberlink, we all belong.



Watch the video on Instagram!



TIMBERLINK FAMILY DAY IN BELL BAY

Our Bell Bay site in Tasmania opened its gates to families and the local community for a Family Day celebration late last year.

The event was a great opportunity to connect with the community, showcase our site, and celebrate the people and families who support our operations. With a range of fun activities on offer throughout the day, it was a relaxed and enjoyable way to bring everyone together.

Thank you to everyone who attended and helped make the Bell Bay Family Day a success.



Employees, family and friends came together on the day to celebrate.

INNOVATE RECONCILIATION ACTION PLAN

We are proud to have launched our Innovate Reconciliation Action Plan (RAP), endorsed by Reconciliation Australia and guiding our reconciliation journey through to December 2027.

Building on the foundations of our Reflect RAP, the Innovate RAP provides a clear roadmap to strengthen relationships, foster respect, and create meaningful opportunities with Aboriginal and Torres Strait Islander Peoples. It reflects our commitment to listen, learn and walk alongside communities as part of our ongoing reconciliation journey.

Guided by Timberlink's purpose — to care for people and timber — and our values of respect, kindness and care, the plan is supported by original artwork created by First Nations artist Reuben Oates for our Bell Bay site, symbolising connection, growth and shared futures.

Through this work, our vision is to contribute to workplaces and communities where Aboriginal and Torres Strait Islander Peoples feel respected, empowered and included — today and into the future.



Timberlink's Innovate RAP document.

WE'RE AUSTRALIAN MADE!

We're thrilled to announce that Timberlink has officially become a licensee of the Australian Made Campaign! This licence applies to Timberlink's range of renewable plantation pine timber products, including Everdeck® wood composite decking, and NeXTimber® Cross Laminated Timber (CLT) and Glue Laminated Timber (GLT).

Timberlink Chief Executive Officer, Paul O'Keefe, said, 'We're proud to display the Australian Made logo across Timberlink's product range. It provides our customers with the certainty that they are supporting Australian manufacturing and local jobs when they choose our products.'

Timberlink will soon begin stamping the iconic Australian Made kangaroo logo on a range of our timber products and printing it on our timber pack wrap, seeking to promote the campaign across Australia.



TONSLEY 'FACTORY OF THE FUTURE' OPENING

It was a milestone moment for mass timber in Australia as Tonsley Technical College officially opened recently. The building features NeXTimber® cross laminated timber (CLT) manufactured locally at our Tarpeena, South Australia facility. Purpose-built to train the next generation of technicians, tradespeople and innovators, the College demonstrates the benefits of engineered timber in modern construction.

We were proud to have Simon Angove, Chief Sales & Marketing Officer, and Jeremy Church, General Manager – NeXTimber, attend the opening, showcasing the importance of mass timber and supporting local manufacturing, regional jobs and responsibly sourced Australian timber.



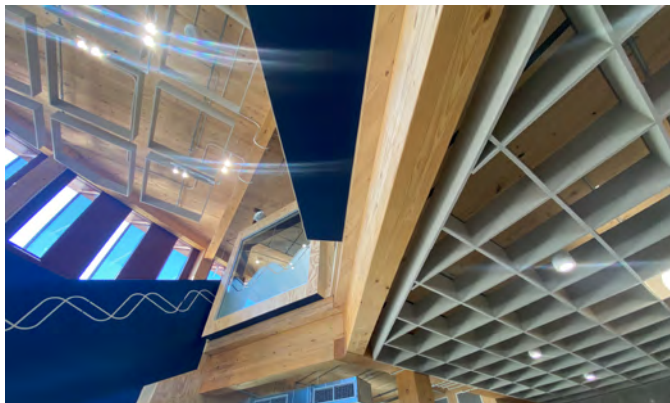
Timberlink's Simon Angove, South Australian Premier Peter Malinauskas and Timberlink's Jeremy Church at the opening.

MT GAMBIER TECHNICAL COLLEGE OPENING

The Limestone Coast Technical College in Mount Gambier has officially opened, marking a significant milestone for education and skills development in regional South Australia.

Contracted by Kennet Builders and delivered for the South Australian Government's Department for Education, the new facility has been constructed using NeXTimber® Cross Laminated Timber (CLT) and Glue Laminated Timber (GLT) for the building's main structure. The college provides purpose-built learning environments for students, with specialist pathways across agri-tech, multi-trades, early childhood education, and health and social support.

NeXTimber worked closely with the project team to develop a mass timber solution that balanced



NeXTimber CLT and GLT on display at the technical college.

architectural intent, performance requirements and buildability, demonstrating the capability of locally grown and locally manufactured timber in large-scale education projects.

Beyond material supply, Timberlink's partnership with the Limestone Coast Technical College reflects a broader commitment to the region, supporting agri-tech and multi-trades programs through site tours, work experience opportunities and potential employment pathways for students.

The opening of the college represents an important investment in future skills, sustainable construction, and long-term opportunities for the Limestone Coast community.



Crowds gather for the official opening event.

Get to Know Our People

GLEN McCALLUM
Reman Production Operator

What is your role and how long have you been working at Timberlink?

I've worked at Timberlink for 40 years. I enjoy working here and I know my role well.

What do you love about working in this industry?

I first started peeling posts, then transferred into the Drymill section where I operated several stations.



Have you always worked with timber products? What's your background?

I've spent the last 8 years in remanufacture and I'm looking forward to spending many more years here.

How do you fill your time outside of work? Any hobbies or interests?

My hobbies outside of work are bowling and playing cards. I also enjoy watching footy.

What's your favourite TV show at the moment?

My favourite TV shows are Doctor Who and Stargate.

What AFL team do you barrack for?

My favourite AFL side is Hawthorn.

JESS MITCHELL
Customer Service Representative

What is your role and how long have you been working at Timberlink?

I'm a customer service representative. I look after NSW and QLD customers. I have been at Timberlink for just over a year now!

What do you love about working in this industry?

The people I work with and our customers, and how you always learn something new. Each day can be different.



What's your background?

No, I haven't. But I have always worked in a customer service based role.

How do you fill your time outside of work? Any hobbies or interests?

When I'm not working, I'm usually out adventuring or camping.

What's your favourite TV show at the moment?

My favourite TV show at the moment is probably MAFS – it's a good laugh this year! But my all time favourite show is How I Met Your Mother.

What AFL team do you barrack for?

Hawthorn (The mighty Hawks!)

Have you always worked with timber products?

OUR TIMBERLINK VALUES



We care



We welcome accountability



We keep things simple



We try new things



We treat each other with kindness and respect

Our Timberlink values.

BARRY THOMSON
Kilns Supervisor

What is your role and how long have you been working at Timberlink?

I am a Kilns Supervisor, and have been with the business 40 years.

What do you love about working in this industry?

The job security and being part of the Timber Industry



Have you always worked with timber products? What's your background?

Yes, always been involved in timber. I started in 1986 with Sapfor.

How do you fill your time outside of work? Any hobbies or interests?

I enjoy travelling and spending time with my children and grandchildren.

What's your favourite TV show at the moment?

I like watching horror movies and mini series, I'm a fan of Stephen King.

What AFL team do you barrack for?

Collingwood Magpies.

We're on Social Media!

Follow Timberlink, NeXTimber and Everdeck on all of your favourite social platforms to stay up to date.

INSTAGRAM

@timberlinkanz
@everdeckbytimberlink
@nexttimberbytimberlink



FACEBOOK

Timberlink Australia & New Zealand



YOUTUBE

@timberlinkanz



PINTEREST

@everdeckbytimberlink
@nexttimberbytimberlink



LINKEDIN

Timberlink Australia & New Zealand
NeXTimber by Timberlink
Everdeck by Timberlink

NeXTimber® News

Powering the Shift to Electric: New Battery Charging Facility at Tarpeena

As more industrial sites transition to electric plant and equipment, the supporting infrastructure matters just as much as the fleet itself. At Timberlink’s Tarpeena site, we’re constructing a purpose-built battery charging building to support the arrival of a new electric forklift fleet in April 2026. The project brings safety, efficiency and material choice together, while also demonstrating how mass timber performs in real, working industrial environments.

Why a dedicated battery charging building matters

Introducing electric forklifts requires more than plugging in chargers. Battery charging and storage must be well ventilated, compliant and carefully managed. Without a central facility, charging points would need to be spread across the site. That approach increases traffic interaction, safety risks and operational complexity. This new building brings everything together in one controlled location.

Designed with safety and site flow in mind

The battery charging building has been planned through a detailed HAZOP process, with a strong focus on:

- Traffic separation and forklift movement
- Risk control during battery charging and handling
- Clear access and servicing arrangements



The charging station under construction using NeXTimber CLT & GLT.

The final location was approved through site review and mobile plant network planning, ensuring it fits safely within existing operations.

Showcasing timber in an industrial setting

The structure features NeXTimber Glue Laminated Timber (GLT) and Cross Laminated Timber (CLT), demonstrating how engineered timber can be used beyond traditional commercial or residential builds.

In this case, timber provides:

- A practical structural solution
- A highly visible, working example of mass timber
- A durable material choice suited to industrial environments

The battery charging building will be a showcase demonstration of timber being used where performance and safety matter.



NeXTimber GLT beams on display during construction.



The charging station with NeXTimber CLT roof panels installed.

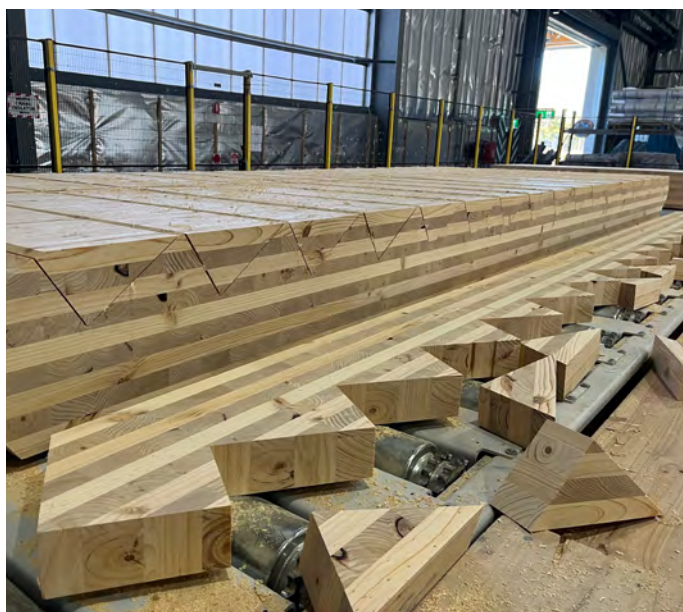
**NEXTIMBER CAPABILITY IN ACTION:
CUSTOM CLT STAIR**

NeXTimber recently supplied a custom Cross Laminated Timber (CLT) stair manufactured from a 360mm-thick panel, showcasing the versatility of CLT beyond standard floor, wall and roof applications. The panel was produced using nine layers of Australian-grown, sustainably sourced MGP10, pressed and manufactured locally to meet specific project requirements.

With the capability to press CLT panels up to 360mm thick and 16 metres long by 3.5 metres

wide, NeXTimber is well positioned to support complex mass timber projects where customised solutions are required. This flexibility allows designers and builders to explore a wide range of structural and architectural outcomes using Australian-made mass timber.

Projects like this demonstrate how NeXTimber continues to work closely with customers to deliver tailored CLT solutions for modern construction.



The custom CLT stair being manufactured.



**MT GAMBIER FORESTRY CENTRE OF
EXCELLENCE OPENING**

Recently, the new Forestry Centre of Excellence in Mount Gambier was officially opened with a ribbon-cutting ceremony attended by industry representatives and government leaders. NeXTimber was proud to be involved in the project, having donated and commercially supplied timber products used in the build.

Projects like this highlight the growing role of mass timber in modern construction and the collaboration between industry, research and government to support more sustainable building outcomes.

We look forward to sharing more from projects like this as timber continues to shape the future of construction in Australia.



The centre was officially opened by Claire Scriven, Minister for Forest Industries, Professor Nicola Phillips, Vice Chancellor and President of Adelaide University, and Nathan Payne, CEO Of South Australian Forest Products Association.

TIMBERLINK® GREEN



Timberlink Green® is Australian grown plantation pine that has been treated with Low Odour LOSP (Light Organic Solvent Preservative) to provide protection against fungal and insect attack.

Ideal for external, above ground applications.



TIMBERLINK® BLUE



Timberlink Blue® is Australian grown plantation pine that has been treated to provide protection from termite (including West Indian Drywood Termite) and European House Borer (EHB) attack.

If you are building in a termite or EHB risk zone, Timberlink Blue is the simple, cost effective solution for protecting the structure of your home.



TIMBERLINK®

Australia & New Zealand



Untreated Australian grown plantation pine timber framing.



NeXTimber®

by Timberlink



NeXTimber® CLT and GLT products are produced from plantation radiata pine. Our high-quality Australian mass timber building solutions offer a renewable timber building solution for commercial, residential, and public projects; used on their own or in conjunction with traditional building materials.



EVERDECK®

by Timberlink



Everdeck® is a range of wood composite products currently comprised of decking boards, edge boards and fasteners. Everdeck® boards are manufactured in Tasmania primarily from a combination of Australian recycled plastic and plantation timber residues such as wood shavings.



TIMBERLINK®

Australia & New Zealand

Timberlink Australia

Ph: 1800 088 135

www.timberlinkaustralia.com.au

Timberlink New Zealand

Ph: +64 3 520 6240

www.timberlinknz.co.nz

Timberlink's wide range of pine products includes untreated and treated structural timber, decking, sleepers, pickets, fencing, packaging timber, high-quality woodchips for export, cross laminated panels (CLT) and glue laminated beams (GLT) and wood composite decking products.

Timberlink®, Everdeck® and NeXTimber® are registered trademarks of Timberlink Australia Pty Limited.