

TIMBERLINK®

Australia & New Zealand

Spring into Decking Season With Everdeck®
Planning and installation resources at your fingertips.

People, Community and Industry Highlights
Some of our favourite moments from the last few months.

We're on Social Media!
Follow us on your favourite social platforms.

SEPTEMBER 2025
NEWSLETTER



EVERDECK®
by Timberlink

NeXTimber®
by Timberlink

Everdeck® Australian Made Wood Composite Decking

Reimagine your outdoor space.



everdeck.com.au



Wheatfield
Brown



Nutmeg
Brown



Mocha
Brown



Espresso
Brown



Driftwood
Grey



Gumnut
Grey

Decking colours are intended as a guide only.

Why choose Everdeck®



Made in Australia

Everdeck decking boards are manufactured in Tasmania. They are designed to withstand tough Australasian conditions such as harsh sun and UV exposure, or wet and damp environments.



Simple to install

Everdeck's concealed fastening system makes installation easy. Our installation resources are suitable for both DIY and professional installers.



Engineered to last

Shop with confidence and peace of mind. Everdeck's decking system warranty lets you enjoy your outdoor space for years to come.



Looks and feels great

Everdeck offers a selection of stylish colours to complement your home or application. The concealed decking fastening system ensures a modern look, minimising visibility of fasteners.



Easy to care for

Everdeck decking boards do not require sanding, sealing or staining, leaving you more time to enjoy your outdoor space.



FSC® certified

Everdeck decking boards are FSC® certified, supporting responsible management of the world's forests.

BEFORE



AFTER



Everdeck® is a range of wood composite products currently comprised of decking boards, edge boards and fasteners. Everdeck boards are manufactured in Tasmania primarily from a combination of Australian recycled plastic and plantation timber residues such as wood shavings.



EVERDECK®
by Timberlink



Spring into Decking Season With Everdeck®

Make the most of the warmer months with our range of Australian made wood composite decking boards.

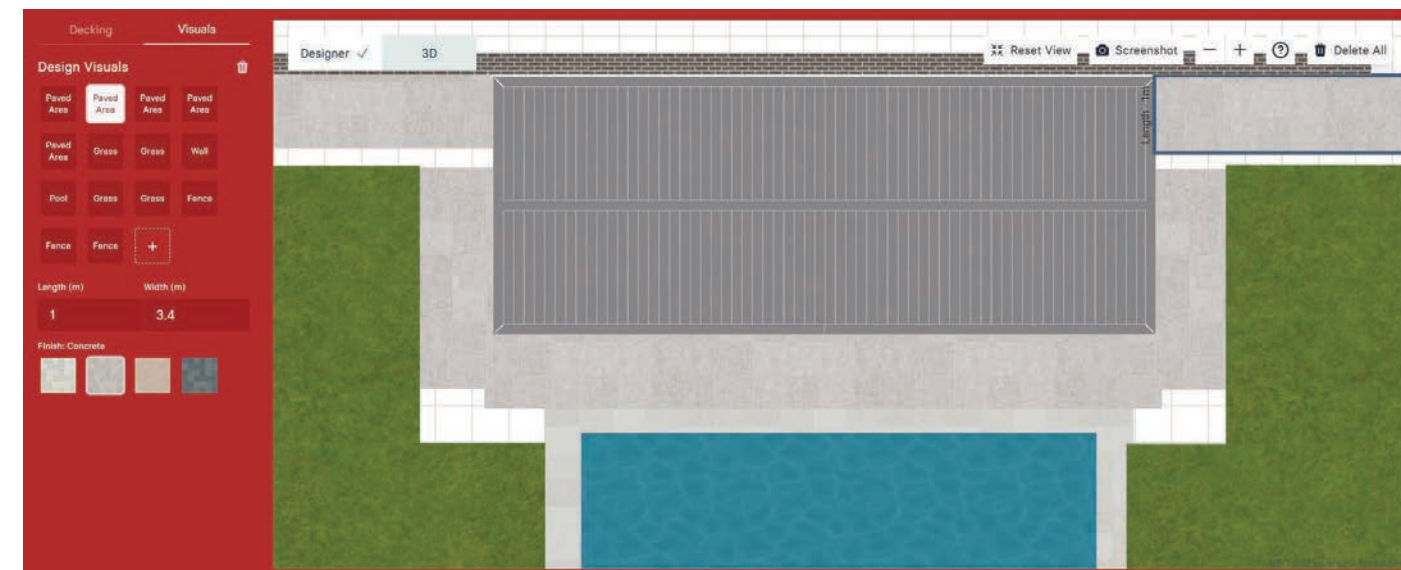
Spring has sprung, and it's time to spend time outside with family and friends! Reimagine your outdoor space with an Australian made wood composite deck. We've made planning and installing your new deck simple with a suite of installation resources at your fingertips.

FREE DECK PLANNER TOOL

With our interactive deck planner tool, you can explore different layout options and colours to create a custom deck design that suits your home or application. Want to visualise your backyard, including lawn, pool or fence? Not a problem! Select from five options in the Design Visuals tab to see your decking vision come to life. You can also generate a materials estimate, helping you to budget for your project. To access the free deck planner tool, head to everdeck.com.au/deck-planner.

DOWNLOADABLE INSTALLATION RESOURCES

Wood composite products are a great choice for building outdoors. However, because wood composite materials have different characteristics to timber, a slightly different approach is required when building with them. The Everdeck installation guide is suitable for both DIY and professional installers, and offers a step-by-step explanation of the process. When building with Everdeck, please read and follow the instructions in this guide in full to ensure a build that adheres to all warranty conditions. The guide is intended to be viewed along with the technical data sheets and warranty statement. You can download all of these resources for free by heading to everdeck.com.au/resources.

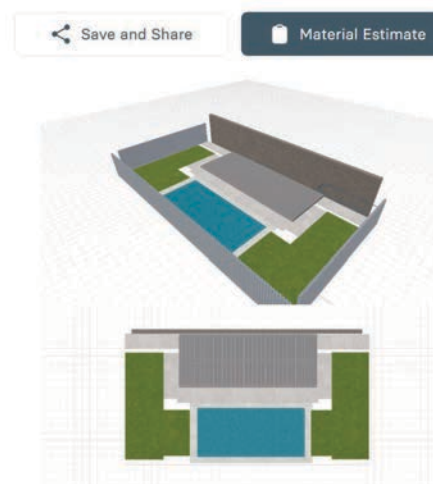


Plan your future deck with our free interactive tool! Add elements like lawns, pools, paved areas and fences, plus try out all six colours by heading to everdeck.com.au/deck-planner.

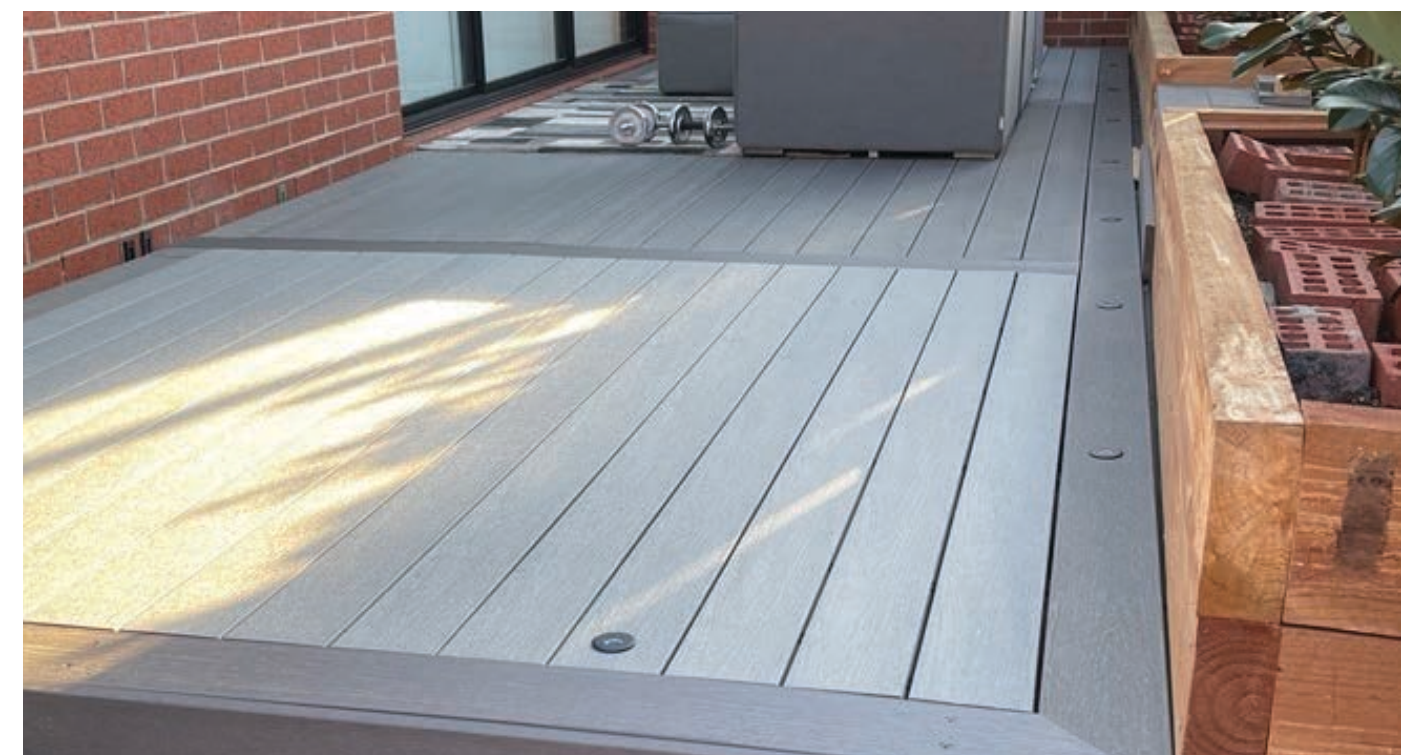
Materials

Decking

Estimated Decking Boards (5.4m)	44
Estimated Edge Boards (5.4m)	6
Starter Clips	1 x 25 Pack
T Clips (4 mm)	1 x 500 Pack + 3 x 50 Packs
Edge Clips	2 x 25 Packs
Wastage	16.95%



Download the installation guide at everdeck.com.au/resources.



Can't decide on a single colour? This clever Everdeck customer has taken advantage of our dual-coloured Gumnut Grey/Driftwood Grey board to create a fun two-tone look!

Decking Terminology

Gearing up to build but getting lost with decking lingo? We're here to help with this excerpt from our installation guide!

BUTT JOINS AND JOINING BOARDS

A butt joint is when two decking boards are installed end-to-end without a gap or breaker board between them. Due to the thermal expansion characteristics of wood composite decking, the use of butt joints is discouraged. It is difficult to achieve uniform gaps across the entire deck surface with butt joints and variations in board lengths. If butt joining decking boards cannot be avoided, the location of butt joints needs to be planned to accommodate the location of double joists in the substructure. This will allow placement of additional clips and adequate support of the decking boards.

BREAKER BOARDS

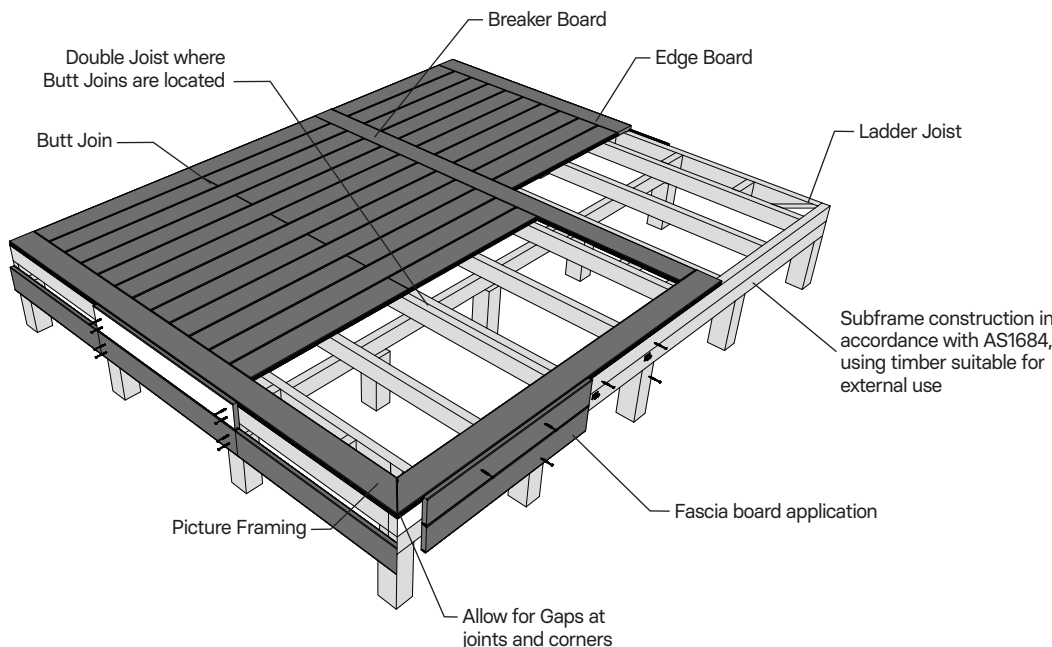
Breaker boards are decking boards that run perpendicular to the main direction of the deck and break up the deck into smaller sections. With early planning, breaker boards can minimise or eliminate the number of butt joints, giving the appearance of a joint free deck. We recommend the use of breaker boards for decks greater than 5.4m in length. In addition to creating a nice design aesthetic, breaker boards help to manage the expansion and contraction of wood composite decking without the need to butt join lengths of decking.

EDGE BOARDS AND PICTURE FRAMING

Picture framing is when edge boards are installed around the outside edges of the deck. Like breaker boards, picture framing is strongly recommended to manage thermal contraction, expansion and to maintain consistent gapping. An edge board has the groove detail on one edge only, allowing the exposed edge to have a clean finish. When used as picture framing, a clean finish to the decking perimeter is possible by surrounding all cut edges. In addition to creating a premium quality appearance for your deck, picture framing also helps manage the expansion and contraction of wood composite decking without the need to butt join lengths of decking.

FASCIA BOARDS

Fascia boards add to the clean aesthetic of your overall decking project. Boards are orientated vertically around the edge of the deck, offering concealment of the substructure and the cut-edges of horizontal boards. There are a couple of options when installing fascia boards. Refer to section 'Edge Board and Fascia Board Installation Options' for detail.



Left: Decking terminology diagram.

Head to everdeck.com.au/resources to download the full installation guide.

Installation guide must be followed to ensure a build that adheres to all warranty conditions.

Supporting our Everdeck Stockists

Are you an authorised Everdeck stockist, or interested in becoming one? We have a suite of resources to help you promote Everdeck both instore and online.

SAMPLE KITS FOR CONSUMERS

Your customers can request a sample kit by visiting everdeck.com.au/customer-sample-ordering or by scanning the QR code.

Kit Contents

- 3x pieces of 137mm dual coloured decking board
- 1x piece of edge board
- 1x 4mm t-clip
- 1x 6mm t-clip
- Everdeck® product guide.



ACCESS THE EVERDECK DIGITAL STOCKIST RESOURCE PACK

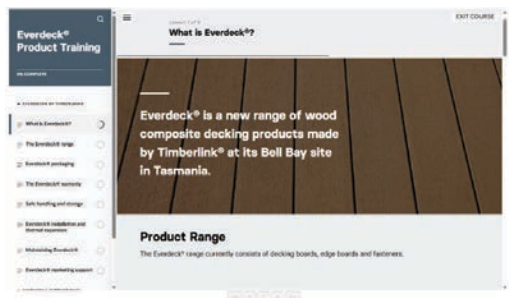
Download Everdeck images, design assets, point of sale materials, socials content and more.

To gain access to the digital stockist resource pack, visit: everdeck.com.au/resource-pack-signup.



ENROLL IN THE EVERDECK ONLINE STOCKIST TRAINING MODULE

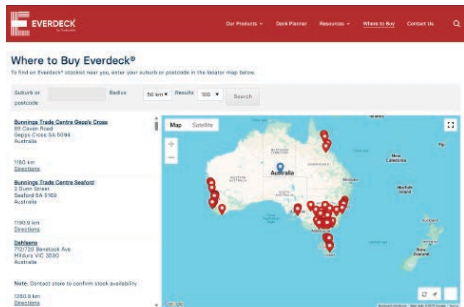
If you are interested in enrolling yourself or your team into the online Everdeck stockist training module, please contact your Timberlink account manager. This course is hosted on Timberlink Tech, our online learning platform.



EVERDECK WEBSITE STOCKIST LOCATOR MAP

Each Everdeck stockist is listed on our interactive locator map.

Head to everdeck.com.au/where-to-buy to check out it out!



Events Wrap-Up

We've been been flat-out on the events circuit lately. Check out where we've been and what we've seen!

DAHLSSENS GRAND OPENINGS - MILDURA & SWAN HILL STORES

June was an exciting month for key Timberlink customer Dahlsens as they opened two brand new Victorian stores in Mildura and Swan Hill.

Eshani Owen and Alan Holter from our Victorian sales crew were thrilled to attend, connecting directly with trades and builders, as well as the Dahlsens team and other suppliers of building products. Eshani and Alan promoted Everdeck, NeXTimber and Timberlink's core range of products on their stand. Timberlink was also a major prize sponsor, highlighting the Everdeck range of wood composite products.

A big thanks to the Dahlsens team for having us!



Everdeck boards on display at the new Dahlsens Mildura store.

GREEN BUILDING DAY

In May Luca Brown represented Timberlink on a panel at the Green Building Council of Australia's Green Building Day event in Adelaide. The topic of the panel session was 'Shaping a sustainable future through circular procurement and responsible materials.' Luca, Technical Sales Manager - NeXTimber, spoke to what circularity means for manufacturers and suppliers such as Timberlink, as well as the potential to drive circularity in the built environment through NeXTimber CLT projects.



Luca Brown (second from right) joins in the panel discussion.

WORLD CONFERENCE ON TIMBER ENGINEERING

In June the NeXTimber by Timberlink team headed to Brisbane for the World Conference on Timber Engineering Conference (WTEC). The theme of this year's WTEC was 'Advancing Timber for the Future Built Environment.' It was a fantastic opportunity to showcase our NeXTimber mass timber solutions, and to keep up with the latest technical and architectural developments and innovations in timber engineering and construction.



Jeremy Church, General Manager - NeXTimber, representing Timberlink at WTEC.

BUNNINGS EXPOS - SA, WA & VIC

We were thrilled to represent Timberlink at not one but three Bunnings expos recently. These events were a great opportunity to spotlight our brand of Everdeck wood composite decking products, as well as our core range of timber products. Thanks to Bunnings for having us!



Timberlink's Alan Holter (left) and Dave Crunden (right) were all smiles at the Bunnings VIC expo!



Timberlink's Leigh Newman (left) with Bunnings buyer Tim Sciberras (right) at the Bunnings SA expo.



Eshani Owen representing Timberlink at the Dahlsens Mildura Grand Opening. Looking great!

Image credit: Dahlsens.

People, Community and Industry Highlights

We are proud to support our people, communities and industry. Here are some of our favourite moments from the last few months.

2025 WOMEN IN RESOURCES AND MANUFACTURING TASMANIA AWARDS

The Timberlink Bell Bay team was thrilled to attend the 2025 Women in Resources and Manufacturing Tasmania Awards, held in Launceston recently. These annual awards aim to shine a spotlight on the women transforming traditionally male-dominated industries. We are so proud of our two winners, Belinda Westergreen and Monique Koski.

Belinda Westergreen, winner of the Outstanding Tasmanian Tradeswoman, Operator or Technician Award, started her journey at Timberlink as night-shift cleaner and has since risen to the position of Green Mill Team Leader. Belinda has developed a company-wide training program, boosted team performance, and championed

diversity, driving operational excellence and inclusion through resilience, innovation and a deep commitment to continuous improvement.

Monique Koski, co-winner of the Exceptional Woman in Tasmania Manufacturing Award, is the first woman to lead our Bell Bay site. With over 20 years of experience in forestry and manufacturing, Monique has driven a production boost and championed inclusive hiring, mentoring and Indigenous engagement, blending operational excellence with a passion for diversity and empowerment.

Both Belinda and Monique will now progress to the 2025 BHP Women in Resources National Awards, recognising their impact on a national scale.

Images credit: Rob Burnett Images.



Belinda Westergreen, winner of the Outstanding Tasmanian Tradeswoman, Operator or Technician award.



Monique Koski, co-winner of the Exceptional Woman in Tasmania Manufacturing award.



The Bell Bay crew strike a pose with our winners!



(Left to right): Belinda Westergreen, Simone Preece & Monique Koski.

2025 TASTAFE TRADE EXCELLENCE AWARDS

We were proud to attend and support the 2025 TasTAFE Trade Excellence Awards in August. This event celebrates the achievements, commitment and excellence of Tasmania's top apprentices, trainees and workplace-based learners.

Our Timberlink team, consisting of Jeremy Bonnice, Erryn Cartledge, Monique Koski and Simone Preece, were all proud to attend the event, showing our support for the future of the industry and our sponsorship of these important awards.



Timberlink's Jeremy Bonnice (left) with winner Chris Bott (right).
Images credit: TasTAFE.

This year, Timberlink sponsored two awards:
Outstanding Training Commitment – Construction Apprentice
Winner: Chris Bott
Presented by Jeremy Bonnice

First Nations Trade Learner of the Year (New for 2025)

Winner: Jacob Maher-Maynard
Presented by Erryn Cartledge

Congratulations to all the nominees and winners, and thank you to TasTAFE for continuing to recognise and celebrate the value of trade training in Tasmania.



Timberlink's Erryn Cartledge (left) with award winner Jacob Maher-Maynard (right).

WOOD MACHINIST APPRENTICESHIP COMPLETE!

We're thrilled to announce that Jed Haines from our Tarpeena site has officially completed his Wood Machinist Apprenticeship. This is a fantastic achievement and a testament to his hard work and dedication.

It is a trade that is less well known outside of the industry, but critical to the ongoing success of our organisation and others in our industry. A big thanks to everyone who has supported Jed along the way. It's always inspiring to see one of our team members grow and reach new milestones!

Pictured: 84 years of wood machining experience in one photo!



(Left to right): Darryl Jackson, Jed Haines & Brett Campbell.

LIMESTONE COAST TECHNICAL COLLEGE PARTNERSHIP & SUPPLY

We are proud to confirm our partnership with the Limestone Coast Technical College, which is currently being constructed using NeXTimber by Timberlink Cross Laminated Timber (CLT) and Glue Laminated Timber (GLT).

Opening in 2026 in Mount Gambier, the technical college will provide students in years 10-12 an advanced opportunity to gain exposure in four key industry areas. These include agri-tech (manufacturing, forestry and agriculture), early childhood and education, health and social support and multi trades (plumbers, carpenters etc).

Timberlink will be supporting the agri-tech and multi trade segments through hosting site tours, work experience opportunities and the possibility of employment for students who complete these courses. With accommodation on site, the Limestone Technical College is open to students in both the public and private school sectors throughout the Limestone Coast region and is a significant investment into the career pathway of students in regional South Australia.

This three year commitment will further enhance the work that has already been done in the Limestone Coast and will position Timberlink as a key employer for students in the region. We are extremely excited to partner the Limestone Coast Technical College and provide experience and opportunity to students. In the coming months there will be an official opening and more information will be provided in terms of our support to the Limestone Coast Technical College.



Timberlink's David Richards (left) with Lynette Corletto (right), Principal of Limestone Coast Technical College.

TIMBERLINK NOMINATED AT THE TASMANIAN TIMBER AWARDS

Congratulations to Timberlink's Brett Sherriff and Peter Woolley, who have both been announced as finalists in the 2025 Tasmanian Timber Awards! Brett has been nominated for the Emerging Leader in the Tasmanian Timber Industry award, and Peter has been nominated for the Outstanding Contribution to the Tasmanian Timber Industry award. Timberlink has also been nominated for the Timber Processing Excellence award, which is a great reflection on our team at Bell Bay.

Congratulations to all the finalists, and we look forward to celebrating in September!



RENEWABLE TIMBER FRAMING CAMPAIGN

We are proud to continue to be a funding partner of the Wood Solutions Renewable Timber Framing Campaign for 2025-2026. Head to woodsolutions.com.au/timber-framing to check out the latest renewable timber resources!



SAFPA 150 YEARS OF SOUTH AUSTRALIAN FORESTRY GALA

2025 marks a major milestone for South Australia as it celebrates the 150th anniversary of the state's forest and timber industries. In June, the South Australian Forest Products Association (SAFPA) held a gala dinner in Mount Gambier to mark this milestone, and Timberlink contributed a custom display made from NeXTimber CLT for the event. Well done to the NeXTimber team - the display looked fabulous and sat in pride of place for the evening! The gala was attended by SA Premier Peter Malinauskas, Minister Claire Scriven, and Assistant Minister for Agriculture, Fisheries and Forestry, Senator Anthony Chisholm. Timberlink was represented on the night by members of our Tarpeena team. Thanks to SAFPA for involving us in this incredible event!



The custom display made from NeXTimber Cross Laminated Timber (CLT). Image credit: SAFPA.

NATIONAL FORESTRY DAY

On August 19th we celebrated National Forestry Day, an initiative of the Australian Forestry Products Association (AFPA) and state-based advocacy associations. The day aims to raise awareness of the great work forest industries do nation-wide. We celebrated the day at all of our sites with branded cookies, coffee and cake!



(Left to right): Scott Brocket, Damien Booth, Lauren Archer and Rebecca Millen from our Bell Bay site strike a pose with their goodie bags.



The cookies were a hit! Frazer Blunden (left) and Rebecca Millen (right) stop for a quick snack.

LAUNCHING FIRST NATIONS ART IN BELL BAY

As we complete our Reflect RAP and start the next important step of Innovate we are delighted to share the launch of a new First Nations art installation at our Bell Bay site, created by Reuben Oates, a proud Trawlwoolway man whose ancestry connects to Chief Mannalargenna through the Dolly Dalrymple line.

The artwork, titled Meeting Place – Together We Grow, a powerful contemporary new art installation by Reuben, showcases the ancestral ties to the River Tamar and the enduring connections of our Aboriginal culture in North East Country, sharing a story of growth, connection, and cultural unity in our modern world.

The installation, featuring Reuben's paintings, was officially unveiled on 12 August during a special event that included a Welcome to Country by Mark Harriss (Trawlwoolway man), followed by speeches from CEO, Paul O'Keefe and Reuben.



Meeting Place - Together We Grow.

Inclusion of this artwork at our sites demonstrates our continuing commitment to honoring and celebrating First Nations culture. It also reflects our core values "We Care", by encouraging deeper cultural understanding and connection of the Country we operate on in Bell Bay.

The Bell Bay installation will remain a permanent feature, with a replica soon to be displayed at our Scoresby site, helping to share the spirit and message of this artwork across our locations.

Reuben's artwork tells the story of the North Tasmanian region, with his journey and connection reflected in his detailed Artist Statement.



Reuben Oates (left) with Timberlink CEO Paul O'Keefe (right).



Artwork unveiling at Bell Bay.

CULTURAL SAFETY AND LEARNING

Timberlink Bell Bay recently had the privilege of welcoming Susan Mansell to our site to deliver two First Nations Cultural Safety Training and History Knowledge sessions. These engaging sessions offered our team a unique opportunity to engage with items of cultural significance and a First Nations cultural map, providing deeper insight into the rich cultural heritage of Aboriginal and Torres Strait Islander Peoples.

Through this experience, we are:

- deepening our understanding and appreciation of First Nations cultures, histories, and knowledge systems
- reflecting on the impact of colonisation and the importance of cultural safety in our workplace and community
- building mutual respect and strengthening our journey towards reconciliation
- supporting a culturally safe and inclusive environment for all.

We're incredibly grateful for Susan's time, knowledge, and generosity in sharing these

important stories and teachings. At Timberlink, we believe that reconciliation begins with awareness, respect, and meaningful action. Everyone's participation in these conversations is highly valued as we continue to learn, grow and support our communities.



Cultural safety training with Susan Mansell (second from left) and Timberlink employees.

RECONCILIATION ACTION PLAN (RAP) UPDATE

We're proud to have successfully completed our Reflect Reconciliation Action Plan (RAP) and are now preparing to move into the next stage of the reconciliation journey. The Reflect RAP focused on building our understanding of the reconciliation landscape and identifying best

practices for embedding reconciliation within our business. The next stage of the Reconciliation journey, Innovate will draw on the foundations already embedded and support First Nation self determination through our sphere of influence. The Innovate RAP document will incorporate the newly commissioned art work for Bell Bay and its release is scheduled for October 2025.



Get to Know Our People

At Timberlink our purpose is caring about people and timber. Meet Fran and Julie, two of our customer service and sales superstars!

FRAN MAIO
Customer Service Representative - VIC/SA & Credits



What is your role and how long have you been at Timberlink?

I am a Customer Service Representative for VIC/SA and credits. I've been with the company for over 24 years.

What do you love about working in this industry?

I have always worked in the timber industry and have worked with some really great people, both wholesale

and retail, over the years. I love every aspect of timber and the industry itself.

Have you always worked with timber? What's your background?

Yes, I started working in the timber industry from when I was 16 years old.

How do you fill your time outside of work?

Gardening, cooking, going to the movies and out with friends.

What's your favourite TV show at the moment?

Not big on TV but I do love murder mystery movies.

Which AFL team do you barrack for?

Sorry... Collingwood!

JULIE CAMPBELL
Account Manager - NSW



What is your role and how long have you been at Timberlink?

I am an Account Manager for New South Wales. I have just had my seven-year anniversary here and have enjoyed every moment of working at Timberlink.

What do you love about working in this industry?

I love the people. There is always something new to learn and it's a mixed variety of clientele to work with. I have a good customer base spread around Sydney,

Central Coast, Newcastle and Ulladulla. I also enjoy the travel.

Have you always worked with timber? What's your background?

My background is in heavy industrial. The steel industry, power tools and abrasives, now timber.

How do you fill your time outside of work?

I love spending time with those closest to me, changing my home décor and listening to music.

What's your favourite TV show at the moment?

Paramedic shows and E.R.

Which AFL team do you barrack for?

I don't follow AFL, but in the NRL - NSW West Tigers!

NeXTimber® News

Our NeXTimber team has been working hard on some updates to our domestic GLT range.

UPDATES TO DOMESTIC GLT RANGE

We are pleased to announce some important changes to our standard range of NeXTimber domestic Glue Laminated Timber (GLT). In order to better support our customers, we have consolidated the product range, moving from 300mm increments to 600mm increments.

We are also stocking more of our frequently ordered sections in our distribution centers located in Victoria, South Australia and Western Australia. Profiles outside of this range can still be custom ordered by contacting your account manager.

Our production cycle is now weekly, with the cut-off for orders closing at 12pm on Wednesdays to make ordering easier for our customers.

To learn more about NeXTimber GLT visit nextimber.com.au.



NEW DOMESTIC GLT GUIDES

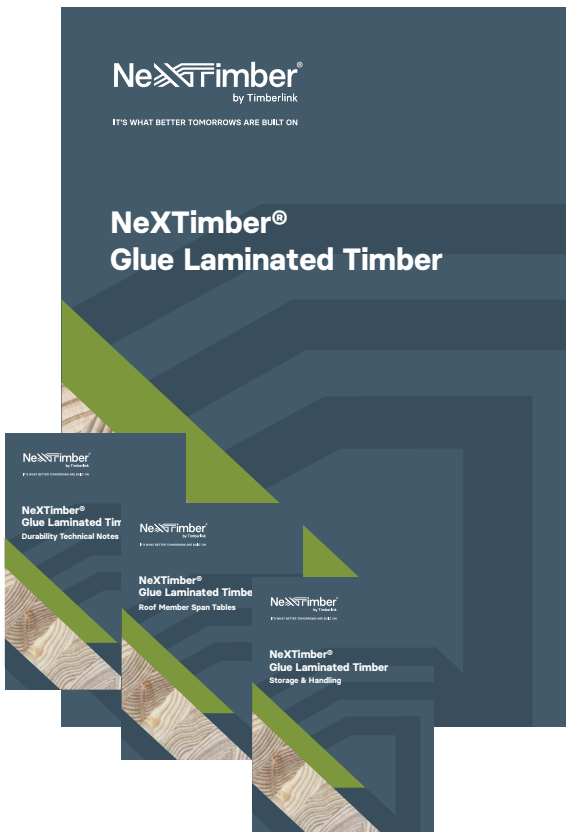
Looking for more technical details about our GLT range? There are now four new NeXTimber Domestic GLT guides hot off the press and available for download:

- GLT Product Guide
- Roof Member Span Tables
- Durability Technical Notes
- Storage & Handling



To download the new GLT guides, head to bit.ly/nextimberGLT or scan the QR code to the left.

NeXTimber®
by Timberlink



Our Timberlink values.

NeXTimber Project Spotlight: Pier Pavilion

THE CLIENT

Stephen Edwards Construction (SEC).

THE LOCATION

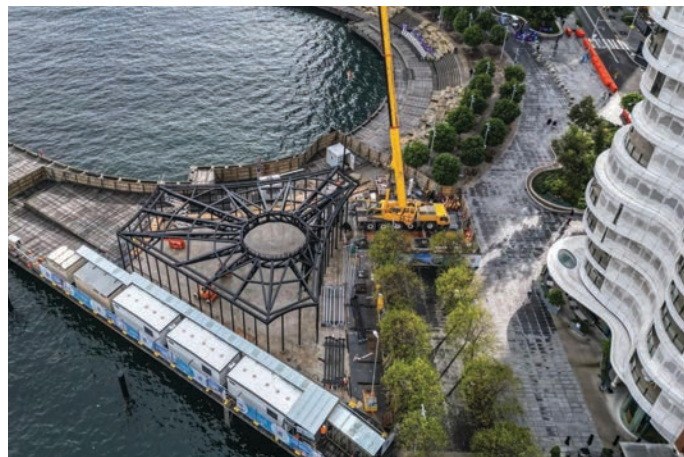
Barangaroo, Darling Harbour, NSW.

THE SOLUTION

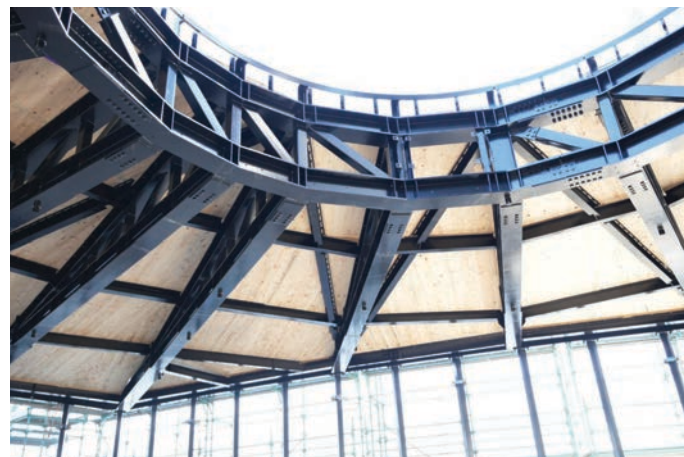
H3 treated NeXTimber Cross Laminated Timber (CLT) panels.

AUXILIARY SERVICES

Pre-fitted temporary construction membrane.



Before: The steel sub-structure at Barangaroo Pier.



After: Interior showing installed NeXTimber CLT panels.



The finished Pier Pavilion at Barangaroo. Image credit: Stephen Edwards Construction (SEC).

We're on Social Media!

Follow Timberlink, NeXTimber and Everdeck on all of your favourite social platforms to stay up to date.

INSTAGRAM

@timberlinkanz
@everdeckbytiberlink
@nexttimberbytiberlink

FACEBOOK

Timberlink Australia
& New Zealand



YOUTUBE

@timberlinkanz



PINTEREST

@everdeckbytiberlink
@nexttimberbytiberlink

LINKEDIN

Timberlink Australia & New Zealand
NeXTimber by Timberlink
Everdeck by Timberlink

TIMBERLINK
Australia & New Zealand

EVERDECK
by Timberlink

NeXTimber
by Timberlink

TIMBERLINK[®] GREEN



Timberlink Green[®] is Australian grown plantation pine that has been treated with Low Odour LOSP (Light Organic Solvent Preservative) to provide protection against fungal and insect attack.

Ideal for external, above ground applications.



TIMBERLINK[®] BLUE



Timberlink Blue[®] is Australian grown plantation pine that has been treated to provide protection from termite (including West Indian Drywood Termite) and European House Borer (EHB) attack.

If you are building in a termite or EHB risk zone, Timberlink Blue is the simple, cost effective solution for protecting the structure of your home.

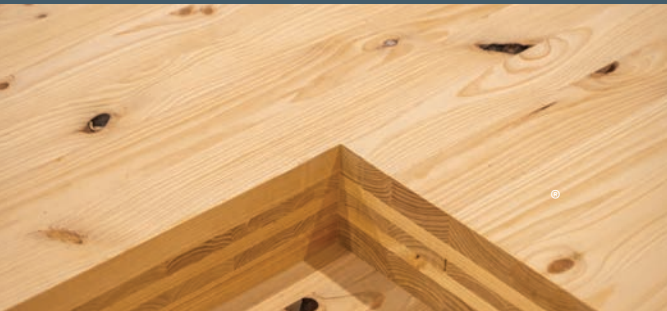


TIMBERLINK[®]

Australia & New Zealand



Untreated Australian grown plantation pine timber framing.



NeXTimber[®] CLT and GLT products are produced from plantation radiata pine. Our high-quality Australian mass timber building solutions offer a renewable timber building solution for commercial, residential, and public projects; used on their own or in conjunction with traditional building materials.

NeXTimber[®]
by Timberlink



Everdeck[®] is a range of wood composite products currently comprised of decking boards, edge boards and fasteners. Everdeck[®] boards are manufactured in Tasmania primarily from a combination of Australian recycled plastic and plantation timber residues such as wood shavings.



TIMBERLINK[®]

Australia & New Zealand

Timberlink Australia

Ph: 1800 088 135
www.timberlinkaustralia.com.au

Timberlink New Zealand

Ph: +64 3 520 6240
www.timberlinknz.co.nz

Timberlink's wide range of pine products includes untreated and treated structural timber, decking, sleepers, pickets, fencing, packaging timber, high-quality woodchips for export, cross laminated panels (CLT) and glue laminated beams (GLT) and wood composite decking products.

Timberlink[®], Everdeck[®] and NeXTimber[®] are registered trademarks of Timberlink Australia Pty Limited.